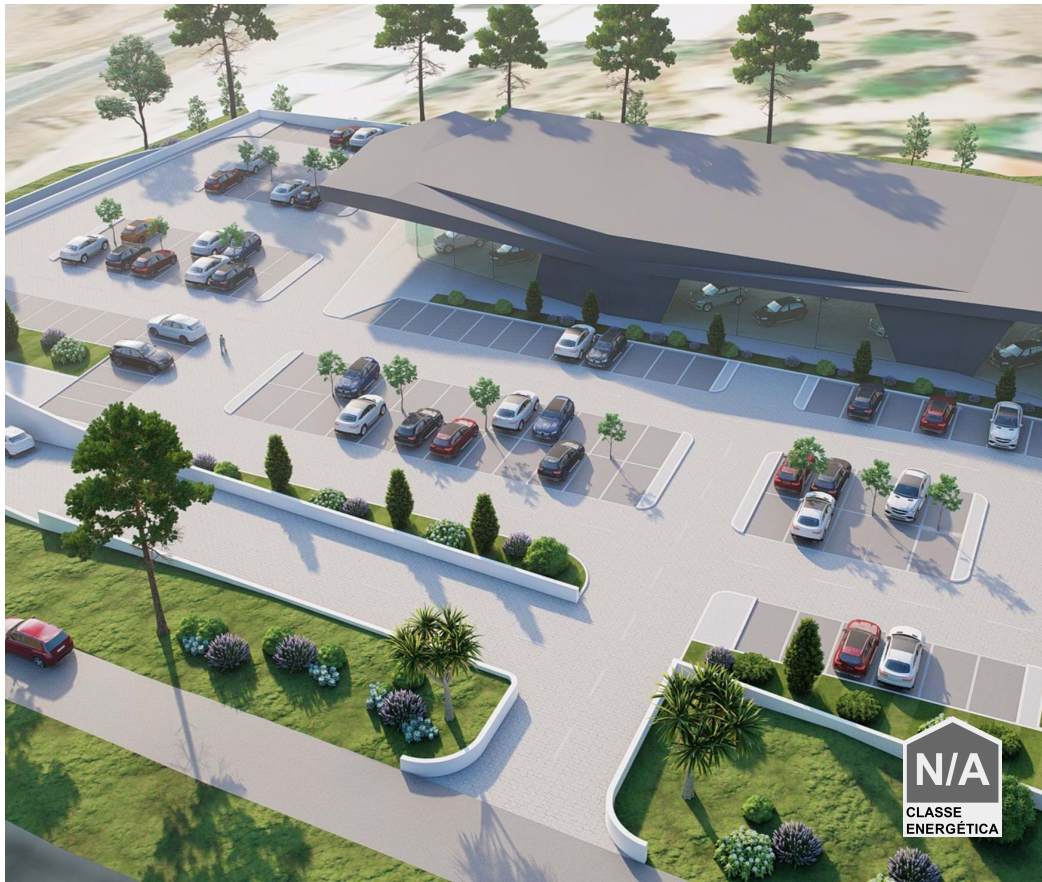




Almancil - Land



3400

Area (m²)

7250

Land Area (m²)

3 200 000 €

(EUR €)

Land for construction of warehouse or Padel courts

Land very well located in an area with excellent access on the Almancil, Loulé and Faro axis. A building (warehouse/commercial) with an area of 1450m² + 1954m² of basement has been submitted to C. M. de Loulé for licensing approval. There is also the possibility of building a padel court complex (with buildings of up to 450m² to support it).

Property Features

- Proximity: City, Open field, Pharmacy, Public Transport, Schools
- Energetic certification: Exempt



Sandra Baião

+351912431061 ²

sandra.baiao@bravaproperties.com

T +351 289 049 671 ¹ · E info@bravaproperties.com
Av. Tivoli , Edf. Via Marina, Loja 14 8125-410 Quarteira
AMI 21073

¹ (Call to national fixed network) | ² (Call to national mobile network)